

## XML\_Pipeline Transform

by Sudheer Sharma - Monday, February 09, 2009

[http://dwhnotes.com/data-integrator/xml\\_pipeline](http://dwhnotes.com/data-integrator/xml_pipeline)

What do you think of this post?

[Awesome \(2\)](#) [Interesting \(2\)](#) [Useful \(3\)](#)

**Note on XML\_Pipeline Transform:** This deals with XML Sources and process large XML files into smaller pieces.

**Options:** No Options for this transform

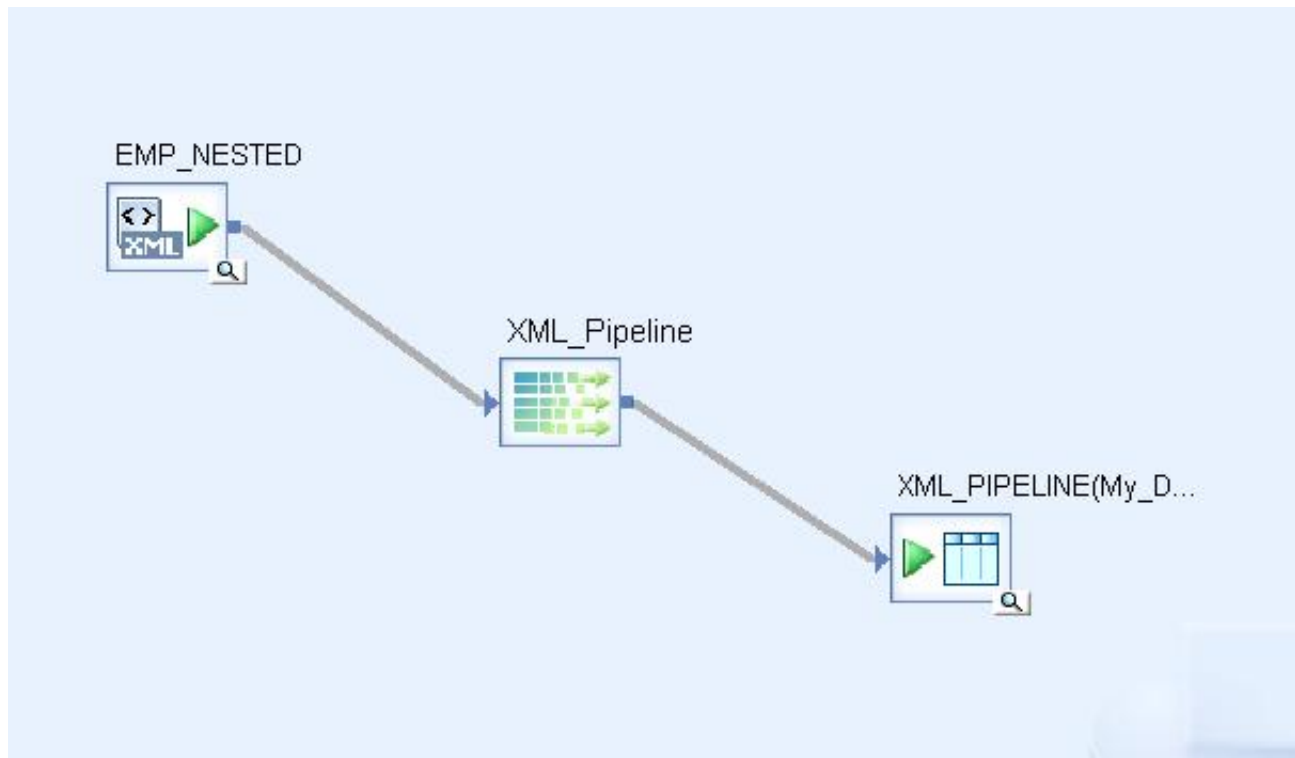
**Rules:**

- *You can't drag the main ROOT to Out schema.*
- *You cannot connect XML\_Pipeline from any other source other than XML type.*
- *You can have one or more XML\_Pipeline transforms in your design.*
- *Once you dragged any child level column to out schema, you cannot drag the entire parent schema to out schema.*



**Design Steps:** My source contains nested schema, i want to unnest and load it into a table.

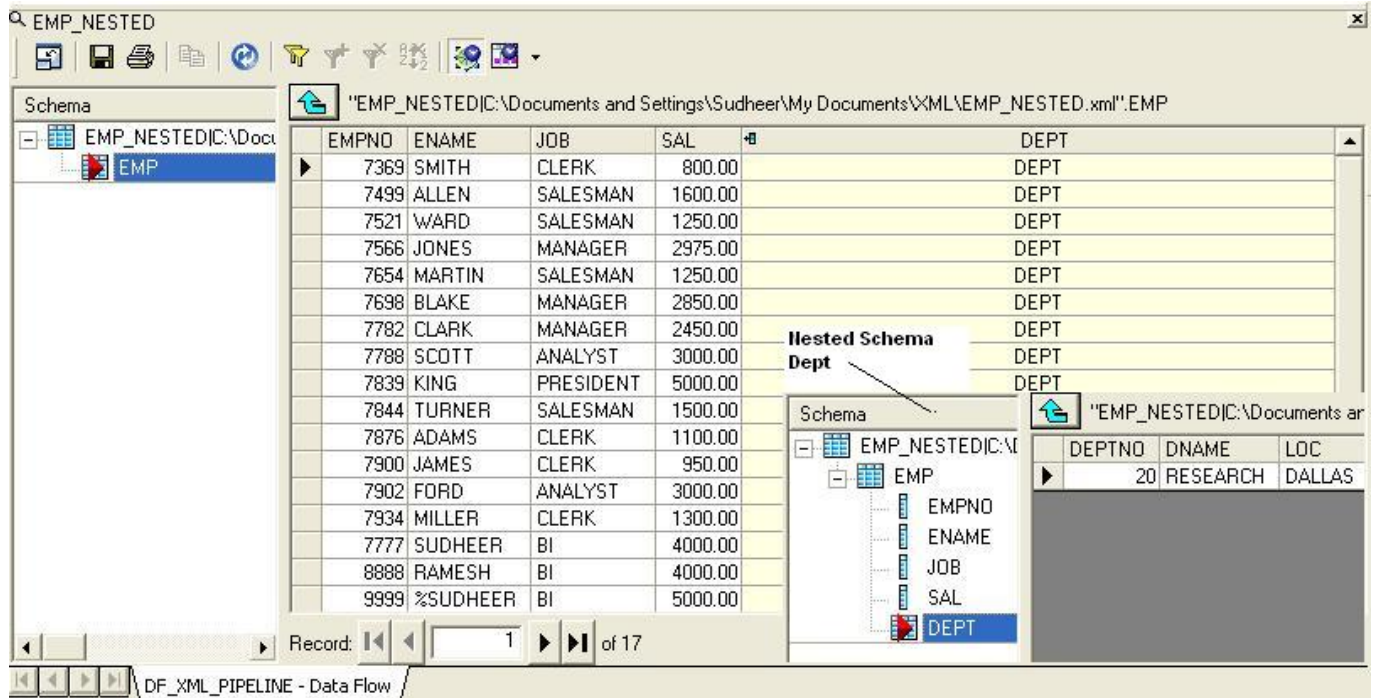
- Drag your XML source from Fileformats (Either XML Schema or DTD), now place XML\_pipeline transform on to the workspace and connect it from source.
- Drag a template table to set as a TGT table.



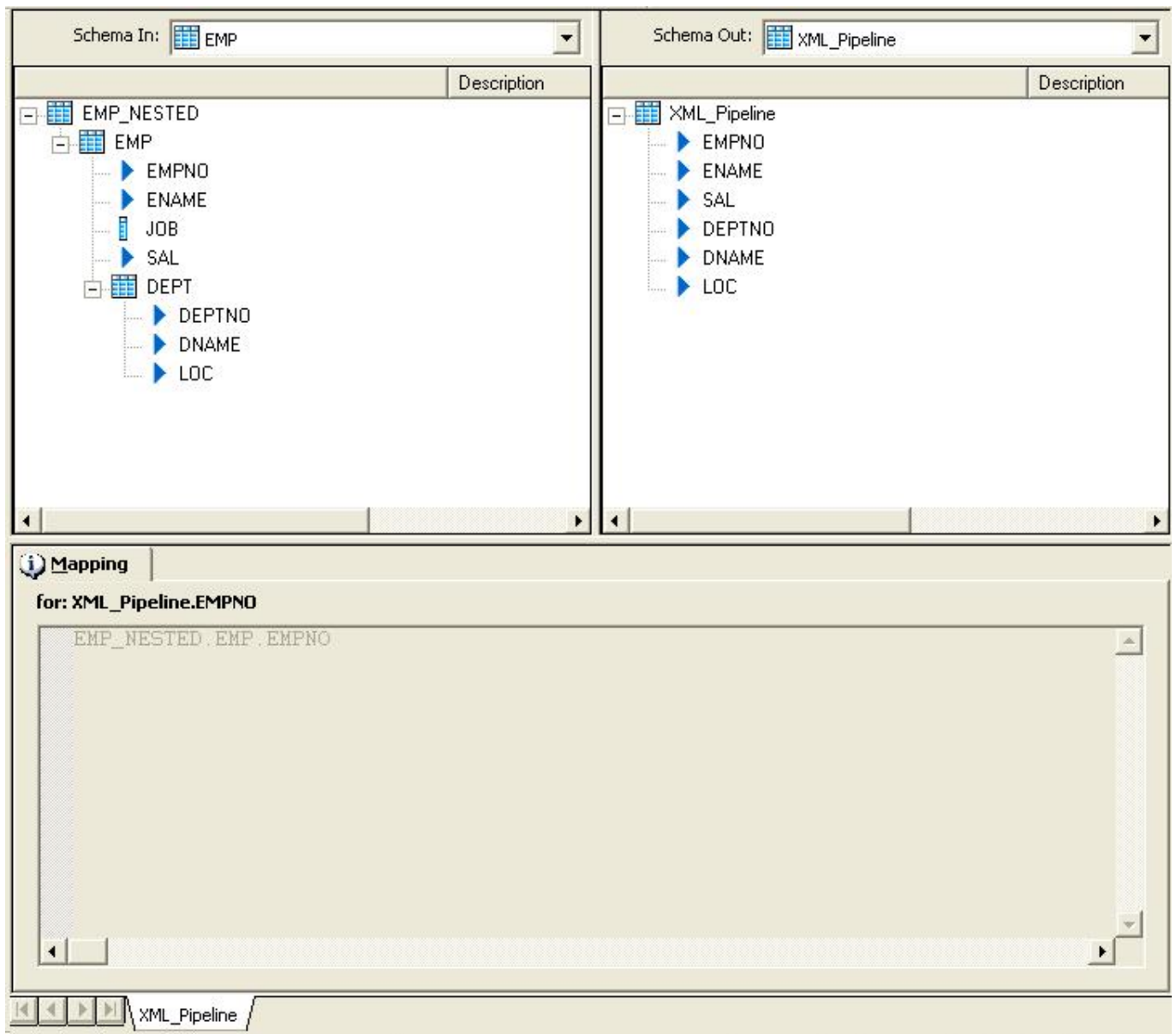
- In my XML source, i have data like this

# XML\_Pipeline Transform - 02-09-2009

by Sudheer Sharma - A small notes. . . - <http://dwhnotes.com>



- Dbl. click on the XML\_Pipeline transform, now drag the columns which you want.



- Here i dragged EMPNO, ENAME, SAL columns from parent schema and DEPTNO, DNAME,LOC from sub schema. Observe the out schema, it contains unnested data.
- Now check the TGT data.

Will post more examples later.

What do you think of this post?

[Awesome \(2\)](#) [Interesting \(2\)](#) [Useful \(3\)](#)

---

PDF generated by Kalin's PDF Creation Station