

## **Loading DI Error, Monitor, Trace files into a table**

by Sudheer Sharma - Saturday, February 21, 2009

<http://dwhnotes.com/data-integrator/loademfiles>

What do you think of this post?

[Awesome \(4\)](#) [Interesting \(0\)](#) [Useful \(3\)](#)

Sometimes we need to write error details(like error number, description) into table.

Let us say, a job is being executed, an error occurred in the middle of the execution, error details will be written in to error log file.

Now, i want to capture those error details and preserve in a backend table.

Are there any metadata tables that holds this information? Certainly, I didn't find any. I looked at metadata table **AL\_HISTORY\_INFO**, It holds the path of log files but not the error values(like error number, description etc.,).

one solution is there, we can use **get\_error\_filename()** environment function, this function gives the current job error log filename and its complete path.

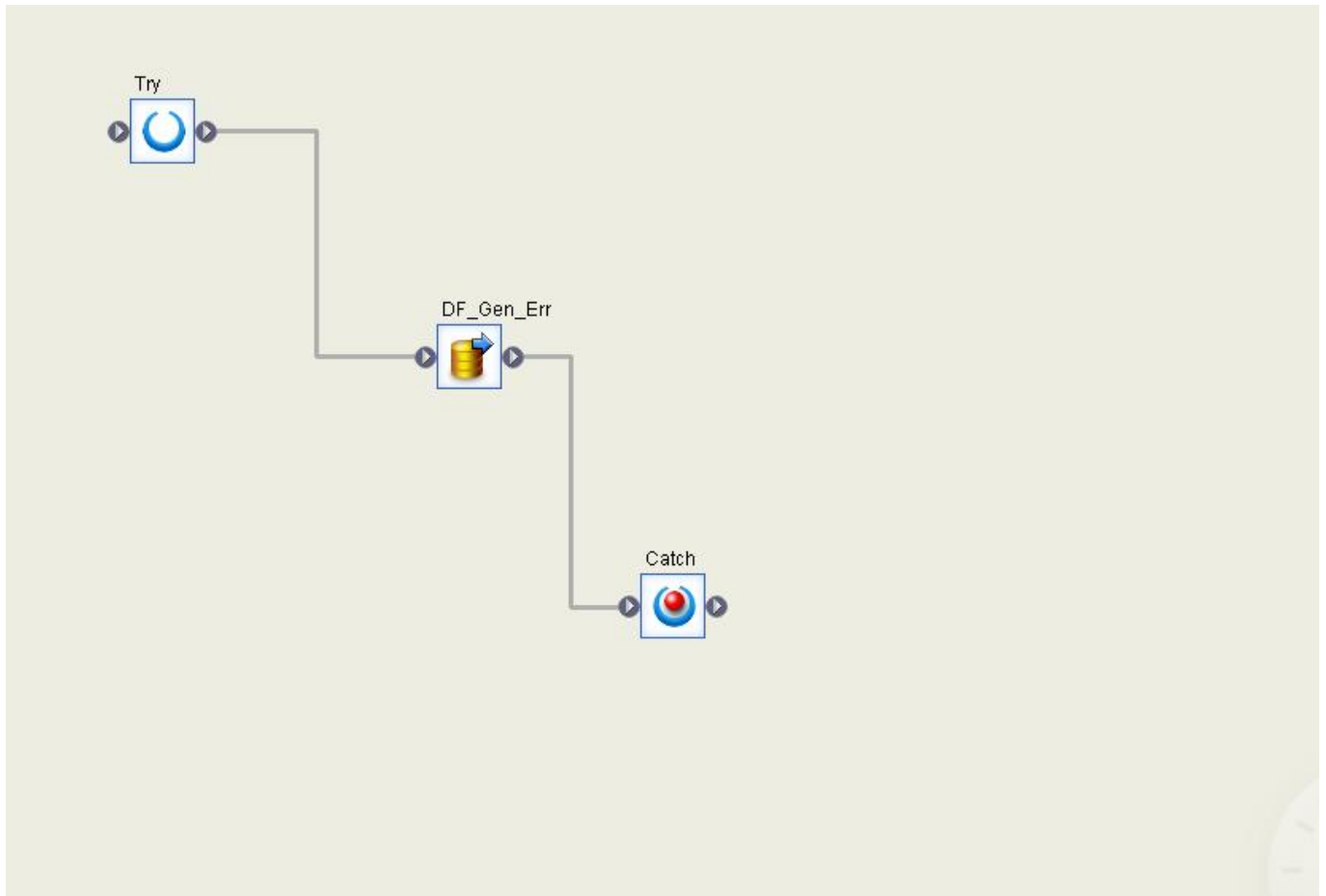
Here is the way to go,

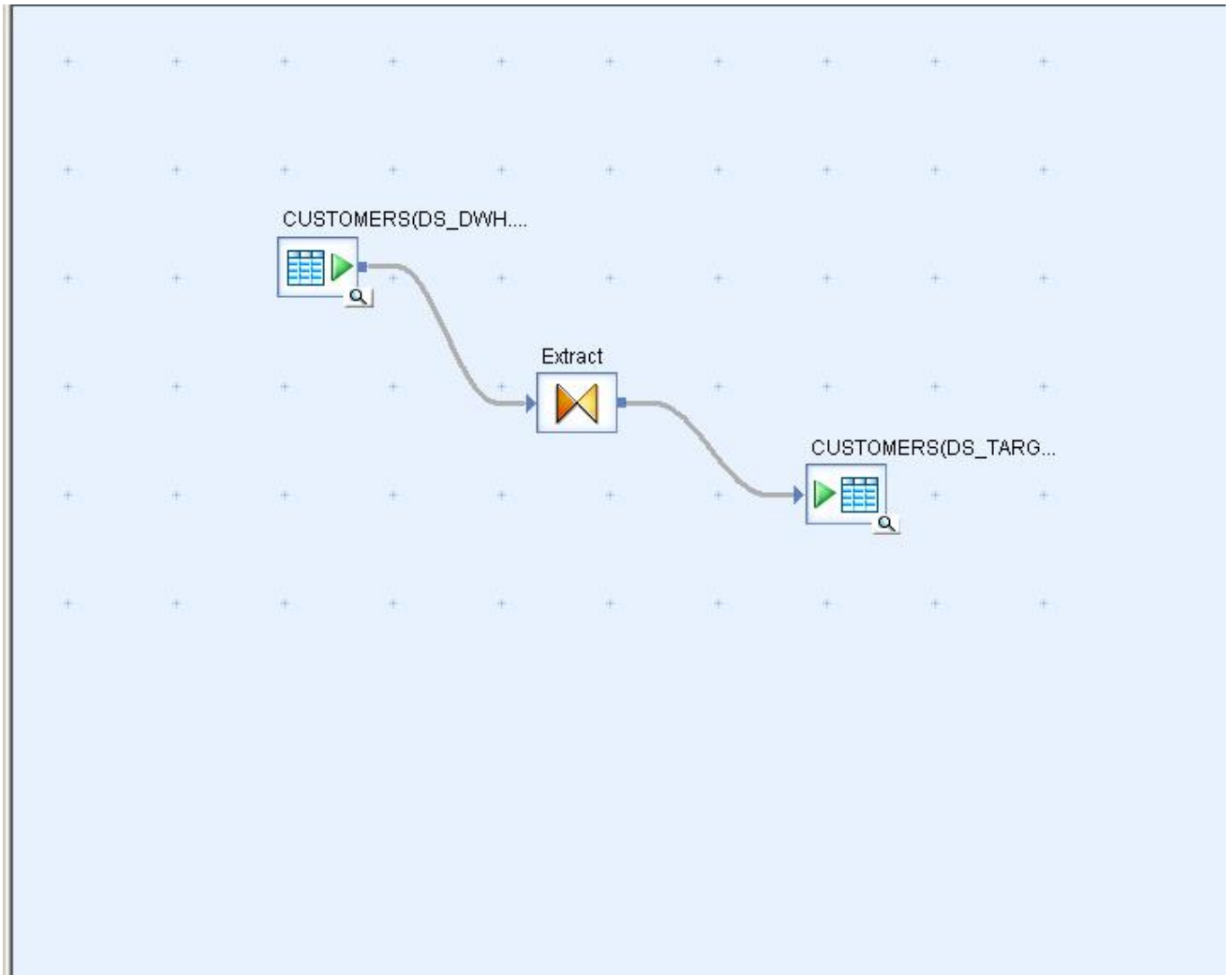
I have a simple dataflow which loads the distinct data into target. Now, I'm purposefully generating an error by loading same data in the target table since it contains unique constraint on **CUSTOMER\_ID** column.

# Loading DI Error, Monitor, Trace files into a table - 02-21-2009

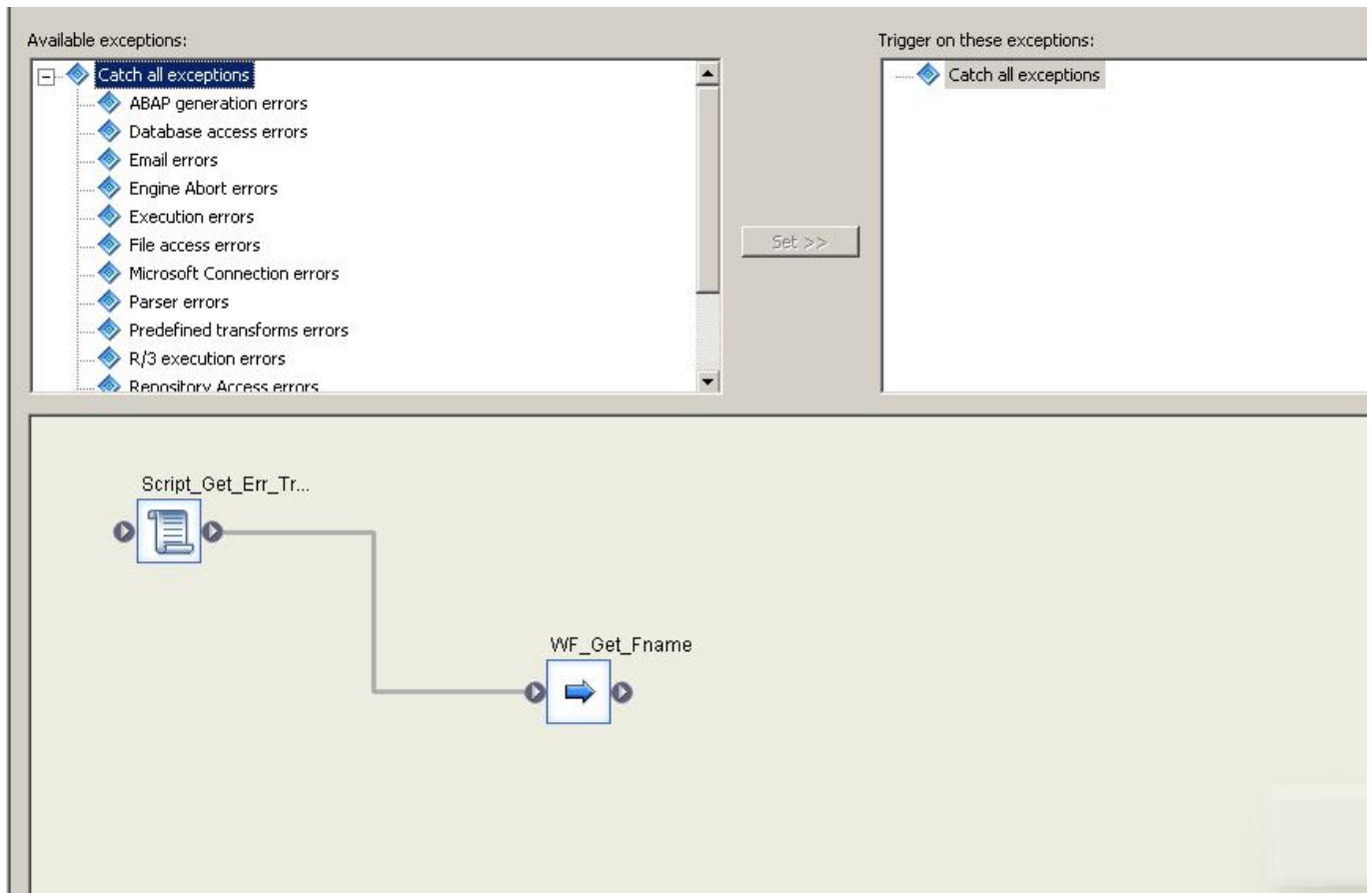
by Sudheer Sharma - A small notes. . . - <http://dwhnotes.com>

---





and in the catch statement, I have a script to get the error filename, monitor filename, trace filename and their path. And in the next step I placed a workflow, in that I have designed a dataflow for each log file to load.



And in the script, I'm using environments functions to get their respective filenames, and passing those values in to three global variables , and then trimming the path from one of the filename.

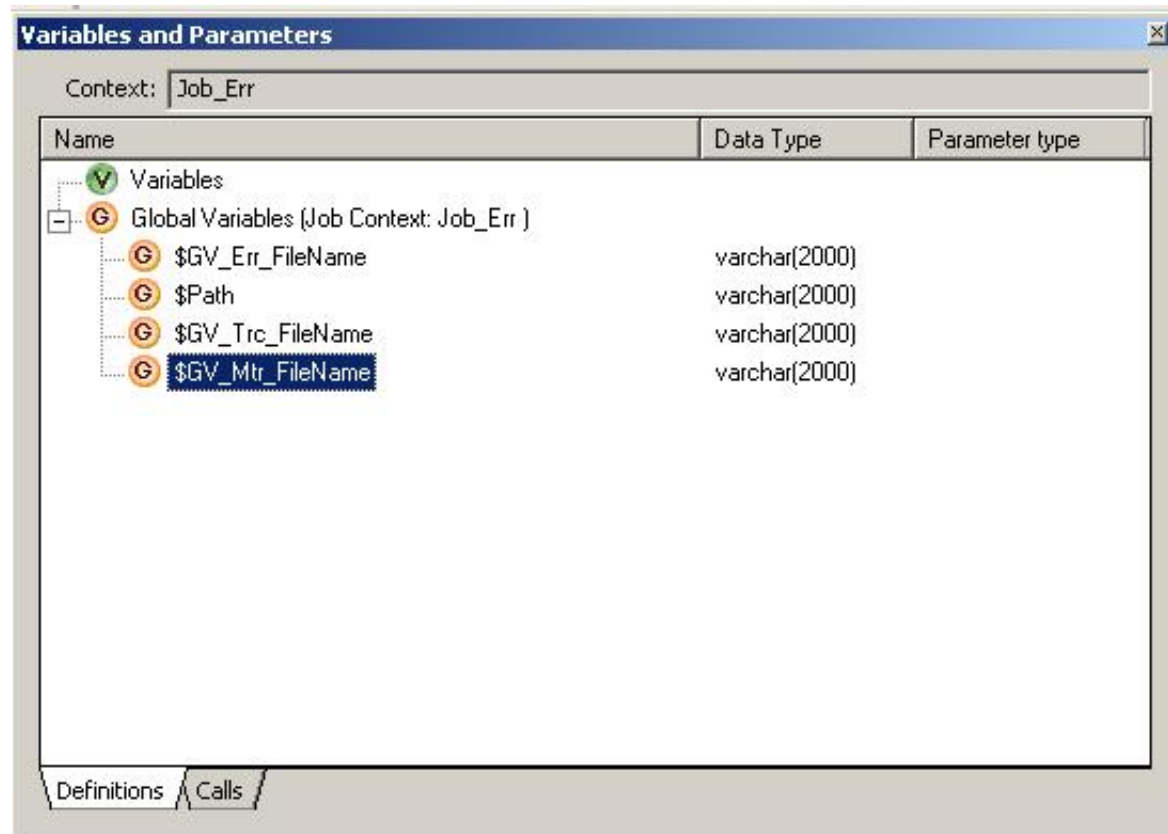
\$PATH —— log files entire path

\$GV\_ERR\_FILENAME —— For Error log filename

\$GV\_MTR\_FILENAME —— For Monitor log filename

\$GV\_TRC\_FILENAME —— For Trace log filename

Define these global variables at job level



```

# Get Error File name from log directory
$GV_Err_FileName = get_error_filename();
print($GV_Err_FileName);
$Path = substr($GV_Err_FileName, 1, index($GV_Err_FileName, '/e', 1)-1);

#exec('D:\print.bat', '', 8);

# Get the path from the file name
$Path = replace_substr( $Path, '/', '\\');
print($Path);

# Trimming the path to get the exact file name
$GV_Err_FileName = substr($GV_Err_FileName, index($GV_Err_FileName, '/e', 1)+1, length($GV_Err_FileName));

# Print filename
print($GV_Err_FileName);

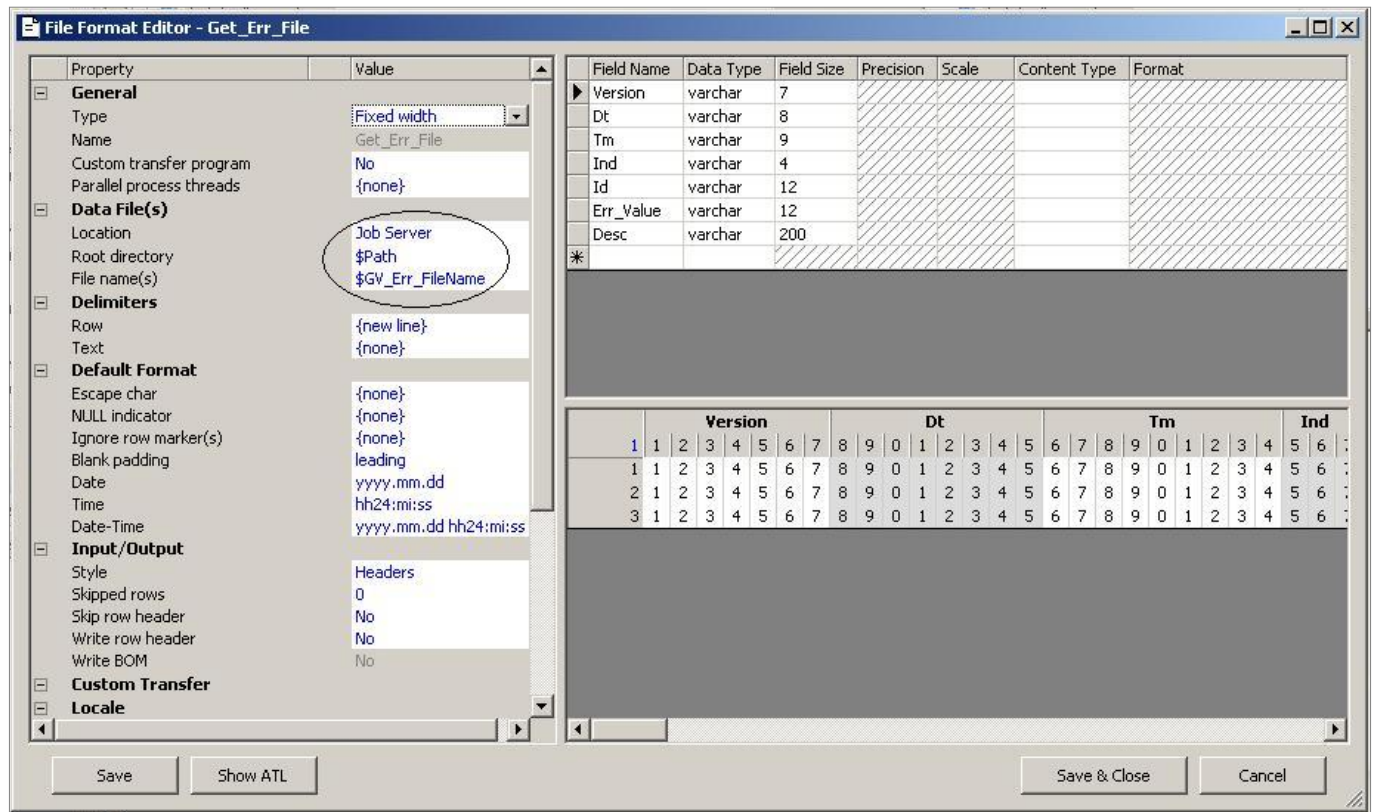
# Get Trace File name from log directory
$GV_Trce_FileName = get_trace_filename();
# Trimming the path to get the exact file name
$GV_Trce_FileName = substr($GV_Trce_FileName, index($GV_Trce_FileName, '/t', 1)+1, length($GV_Trce_FileName));
# Print filename
print($GV_Trce_FileName);

# Get Monitor File name from log directory
$GV_Mtr_FileName = get_monitor_filename();
# Trimming the path to get the exact file name
$GV_Mtr_FileName = substr($GV_Mtr_FileName, index($GV_Mtr_FileName, '/m', 1)+1, length($GV_Mtr_FileName));
# Print filename
print($GV_Mtr_FileName);

```

I have defined fixed width flatfile formats for each log file.

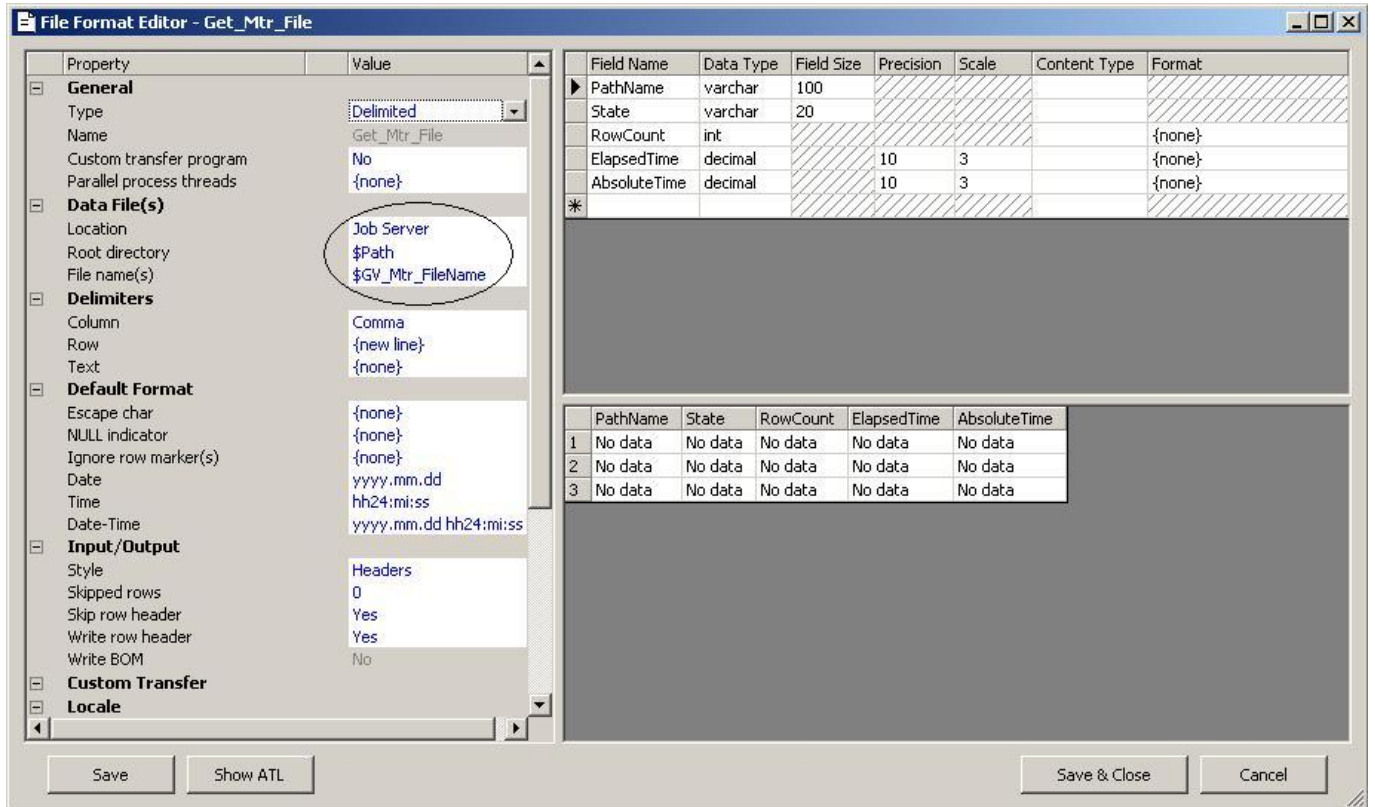
### Flatfile format for Error log



### Flatfile format for Monitor log

# Loading DI Error, Monitor, Trace files into a table - 02-21-2009

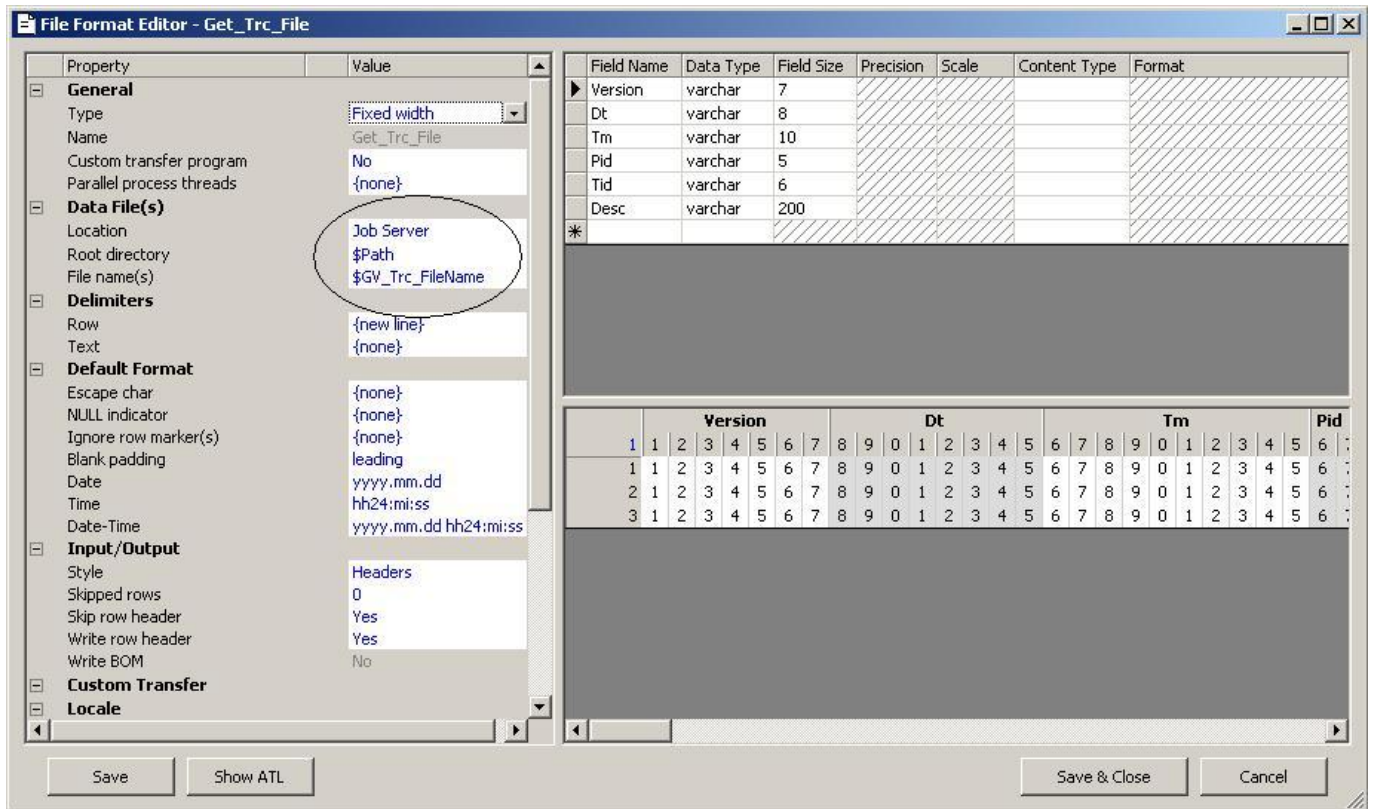
by Sudheer Sharma - A small notes. . . - <http://dwhnotes.com>



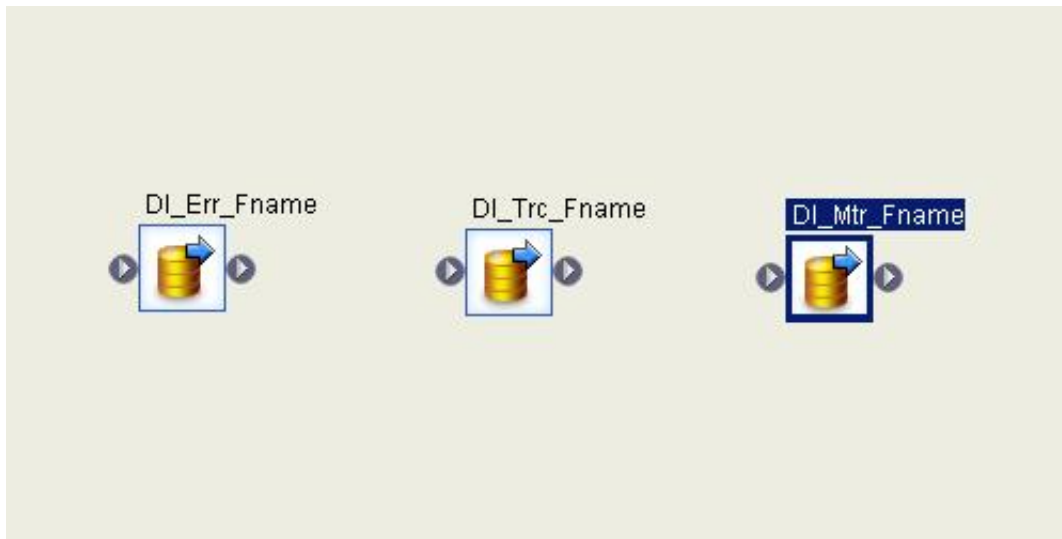
## Flatfile format for Trace log

# Loading DI Error, Monitor, Trace files into a table - 02-21-2009

by Sudheer Sharma - A small notes. . . - <http://dwhnotes.com>



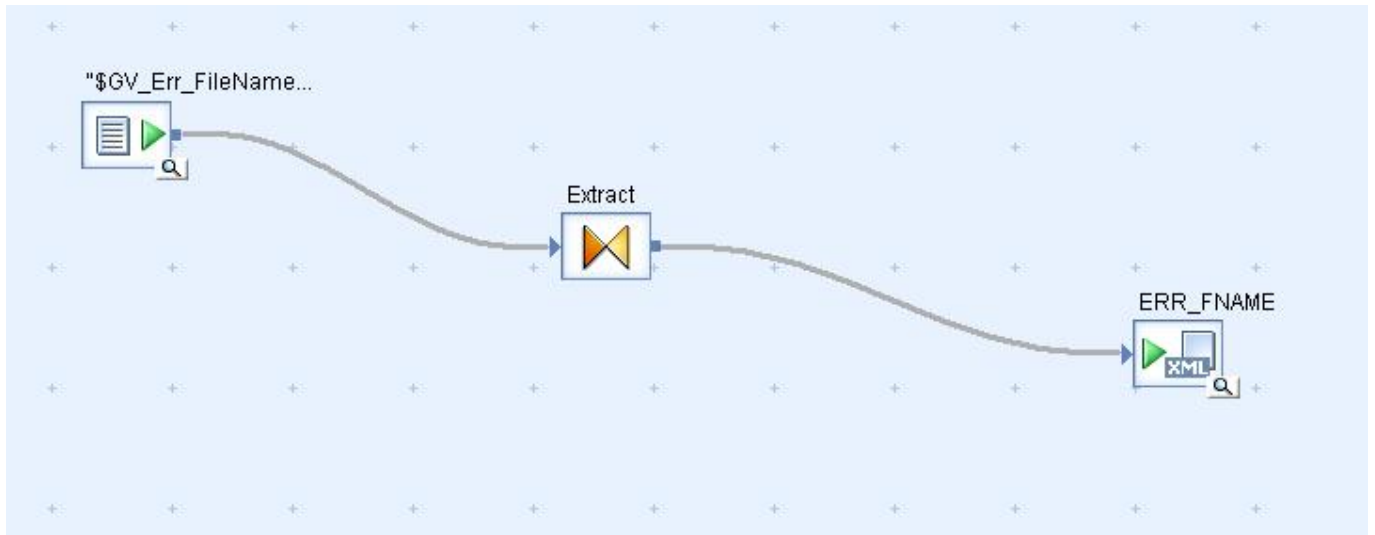
after defining these file formats, design a dataflow for each file.





# Loading DI Error, Monitor, Trace files into a table - 02-21-2009

by Sudheer Sharma - A small notes. . . - <http://dwhnotes.com>



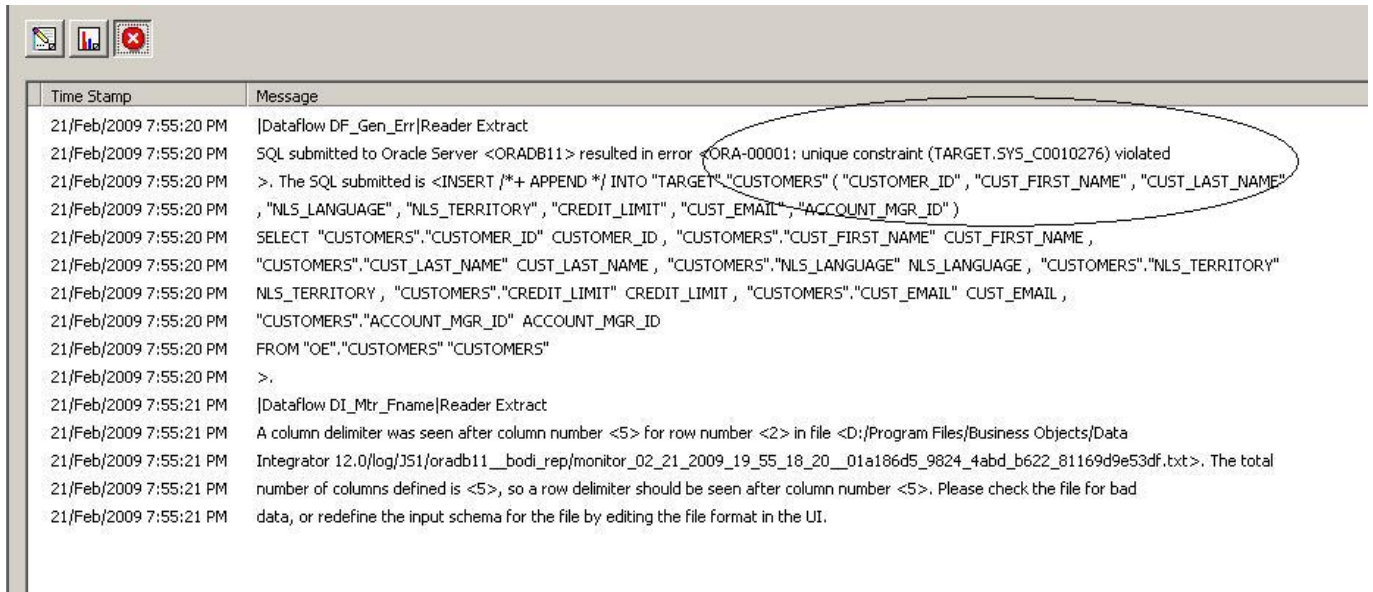
## Trace log window

Pid	Tid	Type	Time Stamp	Message
5008	4372	JOB	21/Feb/2009 7:55:18 PM	Job <Job_Err> of rundid <2009022119551850084372> is initiated by user <SYSTEM>.
5008	4372	JOB	21/Feb/2009 7:55:18 PM	Processing job <Job_Err>.
5008	4372	JOB	21/Feb/2009 7:55:19 PM	Optimizing job <Job_Err>.
5008	4372	JOB	21/Feb/2009 7:55:19 PM	Job <Job_Err> is started.
5448	5596	DATAFLOW	21/Feb/2009 7:55:19 PM	Process to execute data flow <DF_Gen_Err> is started.
5448	5596	DATAFLOW	21/Feb/2009 7:55:20 PM	Data flow <DF_Gen_Err> is started.
5448	5596	DATAFLOW	21/Feb/2009 7:55:20 PM	Cache statistics determined that data flow <DF_Gen_Err> uses <0> caches with a total size of <0> bytes. This is equal to the virtual memory <1610612736> bytes available for caches. Statistics is switching the cache type to IN MEMORY.
5448	5596	DATAFLOW	21/Feb/2009 7:55:20 PM	Data flow <DF_Gen_Err> using IN MEMORY Cache.
5448	5596	DATAFLOW	21/Feb/2009 7:55:20 PM	Data flow <DF_Gen_Err> is terminated due to error <70300>.
5448	5596	DATAFLOW	21/Feb/2009 7:55:20 PM	Process to execute data flow <DF_Gen_Err> is completed.
5008	4372	PRINTFN	21/Feb/2009 7:55:20 PM	D:\Program Files\Business Objects\Data Integrator 12.0\log\J51\oradb11__bodi_rep
5008	4372	PRINTFN	21/Feb/2009 7:55:20 PM	12.0\log\J51\oradb11__bodi_rep
5008	4372	PRINTFN	21/Feb/2009 7:55:20 PM	error_02_21_2009_19_55_18_20_01a186d5_9824_4abd_b622_81169d9e53df.txt
5008	4372	PRINTFN	21/Feb/2009 7:55:20 PM	trace_02_21_2009_19_55_18_20_01a186d5_9824_4abd_b622_81169d9e53df.txt
5008	4372	PRINTFN	21/Feb/2009 7:55:20 PM	monitor_02_21_2009_19_55_18_20_01a186d5_9824_4abd_b622_81169d9e53df.txt
5008	4372	WORKFLOW	21/Feb/2009 7:55:20 PM	Work flow <WF_Get_Fname> is started.
4784	5260	DATAFLOW	21/Feb/2009 7:55:20 PM	Process to execute data flow <DI_Err_Fname> is started.
5300	5912	DATAFLOW	21/Feb/2009 7:55:20 PM	Process to execute data flow <DI_Trc_Fname> is started.
2568	5736	DATAFLOW	21/Feb/2009 7:55:20 PM	Process to execute data flow <DI_Mtr_Fname> is started.
2568	5736	DATAFLOW	21/Feb/2009 7:55:21 PM	Data flow <DI_Mtr_Fname> is started.
2568	5736	DATAFLOW	21/Feb/2009 7:55:21 PM	Cache statistics determined that data flow <DI_Mtr_Fname> uses <0> caches with a total size of <0> bytes. This is equal to the virtual memory <1610612736> bytes available for caches. Statistics is switching the cache type to IN MEMORY.
2568	5736	DATAFLOW	21/Feb/2009 7:55:21 PM	Data flow <DI_Mtr_Fname> using IN MEMORY Cache.
2568	5736	DATAFLOW	21/Feb/2009 7:55:21 PM	Data flow <DI_Mtr_Fname> is completed successfully.
2568	5736	DATAFLOW	21/Feb/2009 7:55:21 PM	Process to execute data flow <DI_Mtr_Fname> is completed.
5300	5912	DATAFLOW	21/Feb/2009 7:55:21 PM	Data flow <DI_Trc_Fname> is started.
4784	5260	DATAFLOW	21/Feb/2009 7:55:21 PM	Data flow <DI_Err_Fname> is started.

## Error log window

# Loading DI Error, Monitor, Trace files into a table - 02-21-2009

by Sudheer Sharma - A small notes. . . - <http://dwhnotes.com>



## Error table data

Version	Date	Time	Pid	Tid	Err_Value	Err_Description
12.0	02-21-09	19:55:20	5448	5596	DBS-070300	SQL submitted to Oracle Server <ORADB11> resulted in error <ORA-00001: unique constraint (TARGET.SYS_C0010276) violated >. The SQL submitted is <INSERT /*+ APPEND */ INTO "TARGET"."CUSTOMERS" ("CUSTOMER_ID", "CUST_FIRST_NAME", "CUST_LAST_NAME", "NLS_LANGUAGE", "NLS_TERRITORY", "CREDIT_LIMIT", "CUST_EMAIL", "ACCOUNT_MGR_ID")
<Null>	<Null>	<Null>	<Null>	<Null>	<Null>	"SELECT "CUSTOMERS"."CUSTOMER_ID" CUSTOMER_ID, "CUSTOMERS"."CUST_FIRST_NAME" CUST_FIRST_NAME, "CUSTOMERS"."CUST_LAST_NAME" CUST_LAST_NAME, "CUSTOMERS"."NLS_LANGUAGE" NLS_LANGUAGE, "CUSTOMERS"."NLS_TERRITORY" NLS_TERRITORY, "CUSTOMERS"."CREDIT_LIMIT" CREDIT_LIMIT, "CUSTOMERS"."CUST_EMAIL" CUST_EMAIL, "CUSTOMERS"."ACCOUNT_MGR_ID" ACCOUNT_MGR_ID
<Null>	<Null>	<Null>	<Null>	<Null>	<Null>	FROM "OE"."CUSTOMERS" "CUSTOMERS"
<Null>	<Null>	<Null>	<Null>	<Null>	<Null>	>.

What do you think of this post?

[Awesome \(4\)](#) [Interesting \(0\)](#) [Useful \(3\)](#)